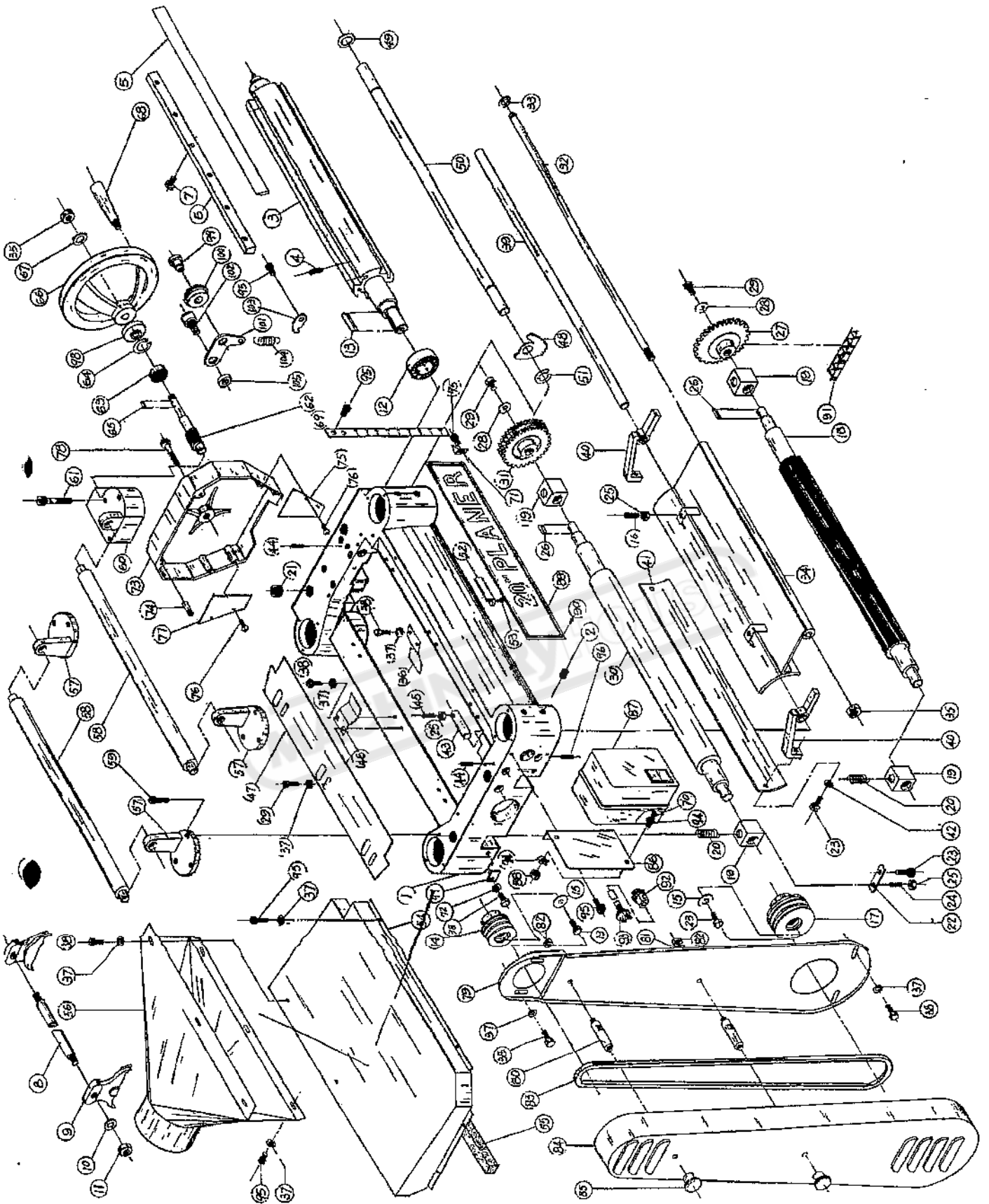


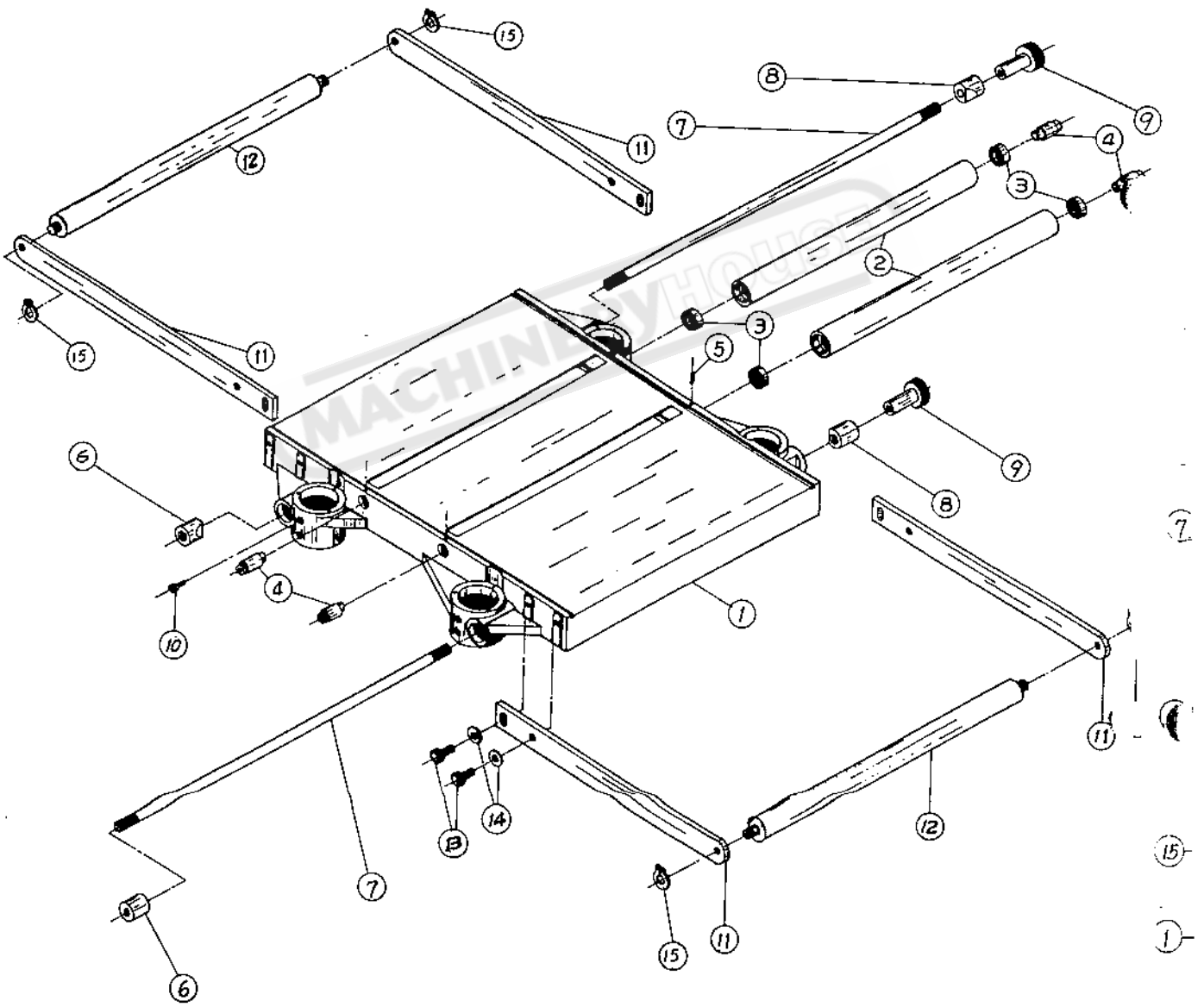
## CUTTERHEAD

Index No.	Parts No.	Parts Name	Q'ty	Remark	Index No.	Parts No.	Parts Name	Q'ty	Remark
1	1001	Head Casting	1		53		Flat Hd. Mach Scr.	2	M6x1.0P-12
2		Set Screw	8	M10x1.5P-12	54	1034	Upper Cover	1	
3	1002	Cutter Head	1		55	1035	Gasket	1	
4	1005	Spring	8		56	1036	Collector Tube	1	
5	1006	Knives	4		57	1037	Roller Stand	3	
6	1003	Knife Locking Bar	4		58	1038	Roller	2	
7	1004	Hex. Hd. Scr.	24	M8x1.25P-10	59		CAP Screw	9	M6x1.0P-16
8	1008	Club of Knife Gage	1		60	1039	Worm	1	
9	1007	Knife Gage	2		61		CAP Screw	3	M6x1.0P-50
10		Washer	2	3/8" x 20x2	62	1040	Worm Gear Box	1	
11		Nut	2	M10x1.25P	63		Bearing	1	6201 Z
12		Bearing	1	6206 ZZ	64		Retaining Ring	1	RTW-32
13		Key	1	8x8x36	65		Key	1	4x4x10
14	1009	Machine Pulley	1		66	1041	Hand Wheel	1	
15	1011	Washer	2	φ8xφ30x3	67		Washer	1	1/2x29x3
16		Set Scr.	2	M6x1.0P-25	68	1042	Handle	1	
17	1010	Motor Pulley	1		69	1043	Scale	1	
18	1012	Infeed Roller	1		70		Machine Screw	2	M5x0.8P x10
19	1013	Bush	4		71	1044	Cut Limit Pointer	1	
20	1014	Spring	4		72		Spring Washer	3	M6
21	1015	Screw	4	M22x1.5P-20	73	1045	Cover	1	
22	1016	Plate	4		74		Spring Pin	2	φ6x20
23		Hex. Hd. Scr.	8	M8x1.25P-20	75	1046	Safety Hatch	1	
24		Set Screw	4	M6x1.0P-16	76		Machine Screw	4	M6x1.0P-8
25		Nut	8	M6x1.0P	77	1047	Safety Hatch	1	
26		Key	2	5x5x28	78		CAP Screw	1	M8x1.25P-40
27	1017	Sprocket	1	31	79	1048	Pulley Guard	1	
28	1018	Washer	2	6.2x22x3	80	1049	Bolt	2	
29		Hex Hd. Scr.	5	M6x1.0P-16	81		Washer	2	5/16" x16x1.8
30	1019	Outfeed Roller	1		82		Nut	2	5/16"-18NC
31	1020	Sprocket	1		83		Bell	3	
32	1021	Locking Bolt	1		84	1050	Pulley Cover	1	
33		Retaining Ring	1	STW-12	85	1053	Nut	2	5/16"-18NC
34	1022	Chip Breaker	1		86	1052	Switch Board	1	
35		Nut	2	M12x1.75P	87		Switch	1	
36	1023	Plate Spring	3		88		Nut	2	M5x0.8P
37		Washer	26	1/4x13/1.2	89	1051	Name Plate	1	
38		Hex. Hd. Scr.	20	M6x1.0P-12	90		Rivet	6	
39	1024	Shaft	1		91		Chain	1	06B
40	1025	Bracket	2		92		Relief Bushing	2	
41	1025	Pressure Plate	1		93		Power Supply Wire	1	
42		Spring Washer	2	M8	94		Tooth Washer	4	EOW-5
43	1027	Shaft	2		95		CAP Screw	14	M6x1.0P-10
44		Set Screw	3	M6x1.0P-12	96		Set Screw	1	M8x1.25P-8
45		Set Screw	2	M5x1.0P-20	97	1054	Washer	4	
46	1028	Plate Spring	1	0.6"	98	1055	Collar	1	
47	1029	Chip Deflector Plate	1		99	1057	Shaft	1	
48	1030	Anti-Kick Finger	87		100	1058	Idle Pulley,	1	
49	1031	Collar	88		101	1059	Bracket	1	
50	1032	Shaft	1		102	1060	Shaft	1	
51		Retaining Ring	2	ETW-15	103	1061	Hanger	1	
52	1033	Cut Limiter Plate	1		104	1062	Spring	1	
					105	1063	Collar	1	



TABLE

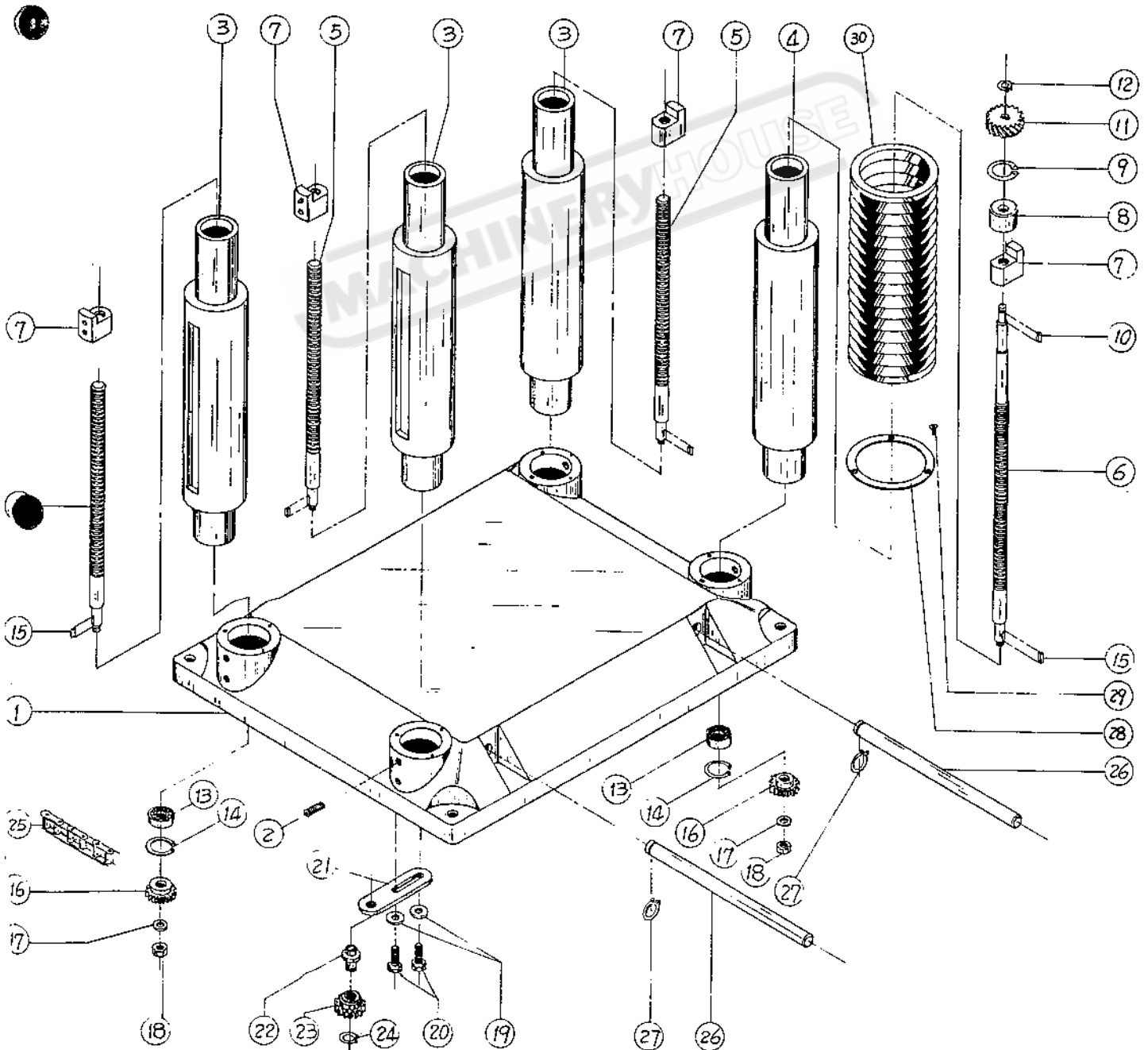
Index No.	Parts No.	Parts Name	Q'ty	Remark	Index No.	Parts No.	Parts Name	Q'ty	Remark
1	2001	Middle Table	1		9	2007	Knob	2	
2	2002	Roll	2		10		CAP Screw	8	M8x1.25P-20
3		Bearing	4	6201 Z	11	2008	Roller Frame	4	
4	2003	Eccentric Shaft	4		12	2009	Roll	2	
5		Set Screw	4	M6x1.0P-12	13		Hex. Hd. Scr.	8	M10x1.5P-25
6	2004	Lock Bar	2		14		Washer	8	3/8" x20x2
7	2006	Locking Bolt	2		15		Retaining Ring	4	STW-12
8	2005	Locksmith	2						



25-1  
16-  
17-

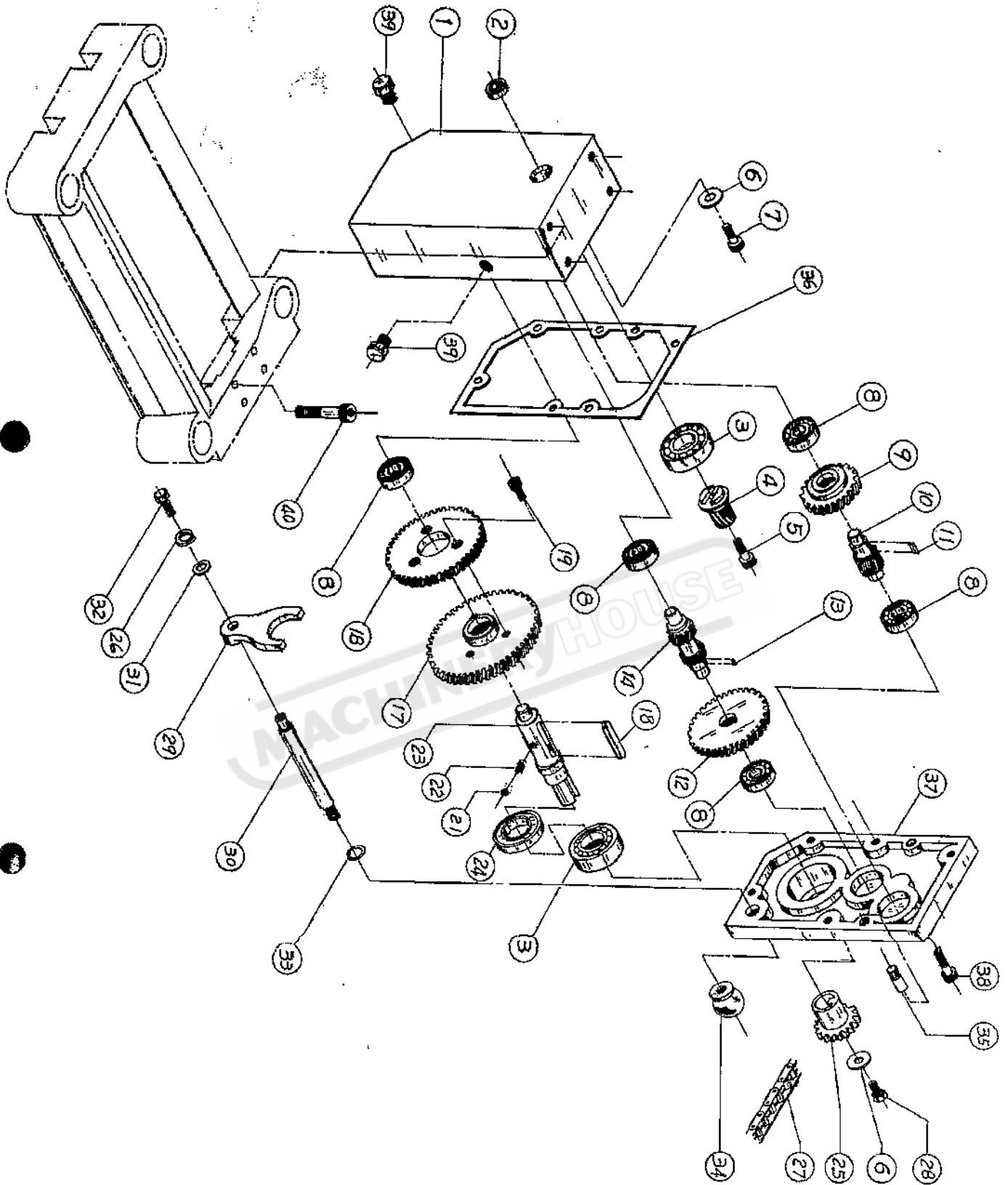
# COLUMN

Index No.	Parts No.	Parts Name	Q'ty	Remark	Index No.	Parts No.	Parts Name	Q'ty	Remark
1	3001	Base	1		16	3010	Sprocket	4	10'
2		Set Screw	8	M10x1.5P-12	17		Washer	4	3/8" x20x2
3	3002	Column	3		18		Nut	4	M10x1.25P
4	3003	Column	1		19	3018	Washer	2	φ8.2x22x3
5	3004	Lead Screw	3		20		Hex. Hd. Scr	2	M18x1.25P-25
6	3005	Lead Screw	1		21	3012	Bracket	1	
7	3006	Nut	4		22	3011	Shaft	1	
8	3007	Bush	1		23	3013	Sprocket	1	10'
9		Retaining Ring	1	RTW-38	24		Retaining Ring	1	STW-15
10		Key	1	4x4x10	25		Chain	1	#40
11	3009	Gear	1	24'	26	3015	Crane Post	4	
12		Retaining Ring	1	STW-12	27		Retaining Ring	4	ETW-19
13		Bearing	4	6202 ZZ	28	3016	Pipe Band	16	
14		Retaining Ring	4	RTW-35	29		Machine Screw	32	M5x0.8P-8
15		Key	4	5x5x16	30	3017	Expansion Bend	8	



## GEAR BOX

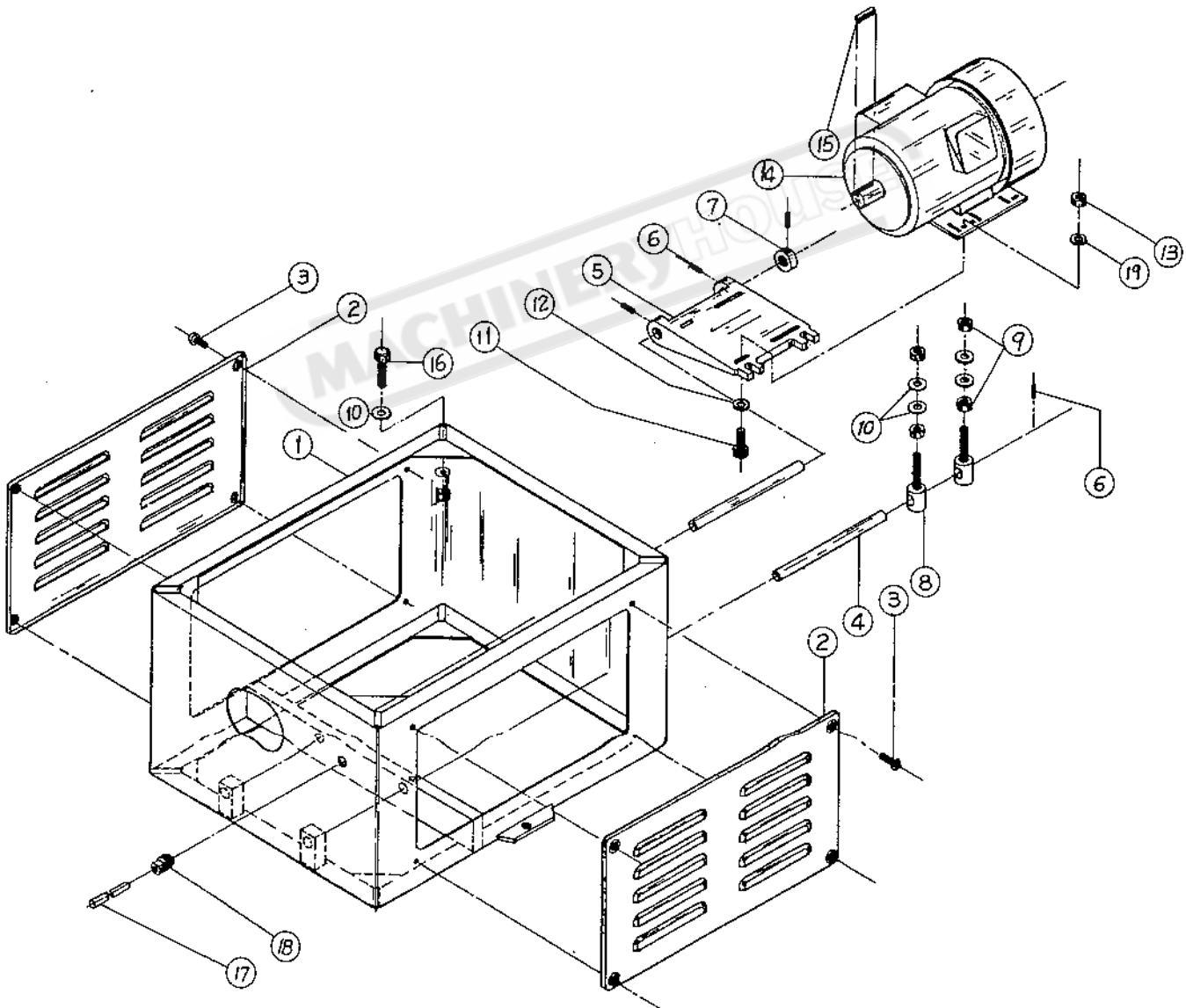
Index No.	Parts No.	Parts Name	Q'ty	Remark
1	5001	Gear Box	1	
2		Oil Seal	1	TC28x40x8
3		Bearing	2	6204 ZZ
4	5002	Gear	1	16 <sup>t</sup>
5		Cap Screw	1	M6x1.0P-20
6	1018	Washer	2	
7		Cap Screw	1	M6x1.0P-16
8		Bearing	5	6201
9	5003	Gear	1	47 <sup>t</sup>
10	5004	Shaft	1	18 <sup>t</sup>
11		Key	1	5x5x12
12	5005	Gear	1	71 <sup>t</sup>
13		Key	1	5x5x10
14	5006	Shaft	1	18 <sup>t</sup>
17	5008	Gear	1	96 <sup>t</sup>
18	5009	Gear	1	92 <sup>t</sup>
19		Cap Screw	3	M6x1.0P-10
20		Key	1	6x6x40
21		Ball	1	φ6
22	5011	Spring	1	
23	5010	Shaft	1	
24		Oil Seal	1	SC25x47x6
25	5018	Sprocket	1	12 <sup>t</sup>
26		Spring Washer	1	M6
27		Chain	1	06B
28		Hex. Hd. Scr.	1	M6x1.0P-16
29	5012	Clutch	1	
30	5013	Handle	1	
31		Washer	1	1/4" x13x1.2
32		Hex. Hd. Scr.	1	M6x1.0P-12
33		Oil Ring	1	P-12
34	5014	Knob	1	
35	5015	Pin	2	
36	5016	Packing Piece	1	
37	5017	Cover	1	
38		Cap Screw	5	M6x1.0P-25
39		Oil Plug	2	PT1/4-19
40		Cap Screw	4	M8x1.25P-50



**DAJC**

Index No.	Parts No.	Parts Name	Q'ty	Remark
1	4001	Stand	1	
2	4002	Cover	2	
3		Machine Screw	8	M6x1.0P-20
4	4004	Bar	2	
5	4003	Motor Mount	1	
6		Set Screw	4	M8x1.25P-8
7	4005	Coller	1	
8	4006	Adjust Bolt	2	
9		Nut	8	M12x1.75P
10		Washer	4	1/2x29x3

Index No.	Parts No.	Parts Name	Q'ty	Remark
11		Hex. Hd. Scr.	4	M8x1.25P-25
12		Washer	4	5/16" x23x2
13		Nut	4	M8x1.25P
14		Motor	1	3HP or 5HP
15		Key	1	
16		Hex. Hd. Screw	4	M12x1.75P-60
17		Power Supply Wire	1	
18		Relief Bushing	1	
19		Washer	4	5/16" x16x1.8



### BASE

Index No.	Parts No.	Parts Name	Q'ty	Remark	Index No.	Parts No.	Parts Name	Q'ty	Remark
1	4001	Stand	1		11		Hex. Hd. Scr.	4	M8x1.25P-25
2	4002	Cover	2		12		Washer	4	5/16" x23x2
3		Machine Screw	8	M6x1.0P-20	13		Nut	4	M8x1.25P
4	4004	Bar	2		14		Motor	1	3HP or 5HP
5	4003	Motor Mount	1		15		Key	1	
6		Set Screw	4	M8x1.25P-8	16		Hex. Hd. Screw	4	M12x1.75P-60
7	4005	Coller	1		17		Power Supply Wire	1	
8	4006	Adjust Bolt	2		18		Relief Bushing	1	
9		Nut	8	M12x1.75P	19		Washer	4	5/16" x16x1.8
10		Washer	4	1/2x29x3					

